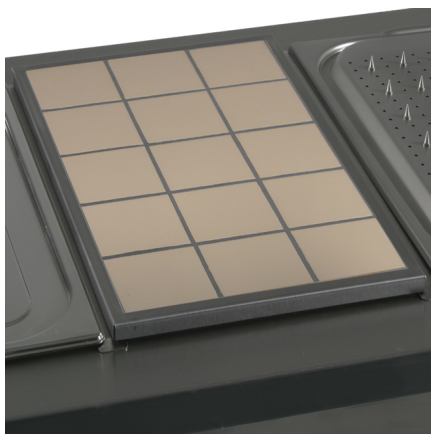


Inserts and other options



Tiled Insert - DHTP1

DHTP1

GN1/1 size tiled insert, Suitable for use with all Victor Bains Marie units. Standard tile colour is Magnolia, other tile colours available.

from stock for next day despatch

Available

Specifications

Dimensions: External: 530 x 325 x 10mm
Capacity 1 x GN1/1

Construction Stainless Steel surround, Ceramic Tiles

Victor Manufacturing Limited

Lonsdale Works, Gibson Street, Bradford, BD3 9TF, West Yorkshire, England

Tel: +44 (0)1274 722125

Email: email@victormanufacturing.co.uk

Copyright © 2020 Victor Manufacturing Limited