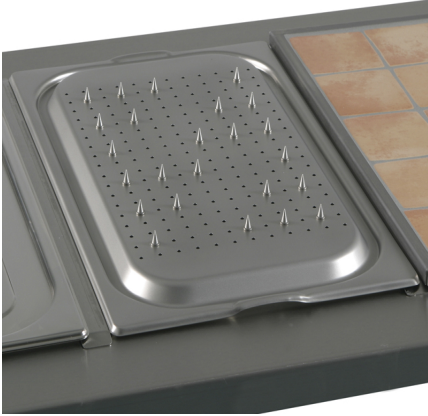


## Inserts and other options



### Carvery Insert - BMCV2

#### BMCV2

Converts any GN1/1 size Bain Marie into a Carvery pad **Av ailable from stock for next day despatch**

## Specifications

Stainless Steel construction, with perforations and meat spikes Supplied with:

- 1 x GN1/1 – 65mm deep container

---

### Victor Manufacturing Limited

Lonsdale Works, Gibson Street, Bradford, BD3 9TF, West Yorkshire, England  
Tel: +44 (0)1274 722125 Email: email@victormanufacturing.co.uk  
Copyright © 2020 Victor Manufacturing Limited