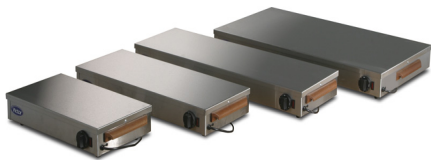


Heated Display Units



Hot plates - HP

HP

Targeting all needs and budgets the Victor range of hot plates are designed for the simple yet effective presentation of heated food **These products are available from stock for next day despatch** *With wooden carrying handle*

Model No: HP1 - 600 x 300 x 115mm Model No: HP2 - 800 x 300 x 115mm Model No: HP3 - 1000 x 300 x 115mm Model No: HP4 - 1000 x 500 x 115mm

Specifications

Model ----- size ----- loading HP1 ---- 600 x 300 x 115mm high --- 0.3kW HP2 ---- 800 x 300 x 115mm high --- 0.4kW HP3 --- 1000 x 300 x 115mm high --- 0.85kW HP4 --- 1000 x 500 x 115mm high --- 0.85kW

Electrical Connection 220V/240V 1 phase 50Hz Cable: 2 metres with 13 amp plug fitted


Construction Top: Stainless Steel, Exterior: Stainless Steel

Features

Standard Features:

- Adjustable thermostatic control to base
- Removable wooden carrying handles
- All stainless construction

Downloads

-  [Operating Manual](#)
- [HP1 AutoCAD Download](#)