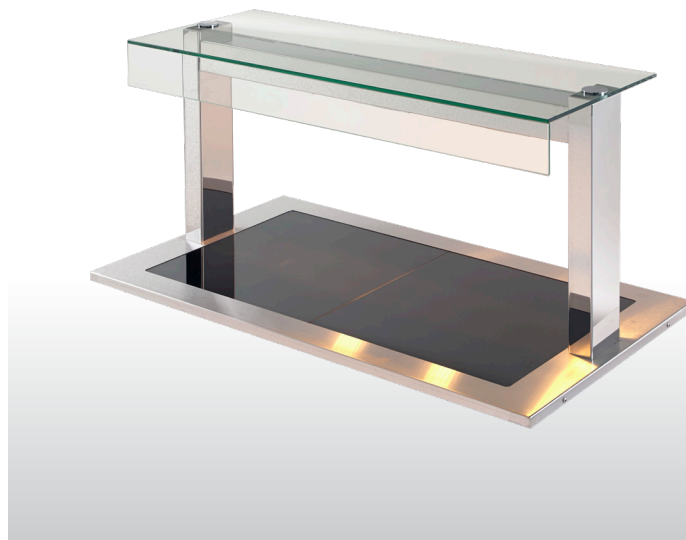


## SYNERGY DROP INS

### SQ CERAMIC HOT PLATE

#### MODEL NO: SSHHP

The Synergy range of Heated Refrigerated and Ambient displays designed to be dropped into a counter surface to form a food servery. Each Synergy display is self-contained and easily installed. Synergy displays complement each other in both style and profile. They are constructed using satin finish stainless steel surrounds, bright polished gantries and toughened glass sneeze screens.



#### DIMENSIONS

SSHHP2: 850mm x 660mm x 540mm  
SSHHP3: 1177mm x 660mm x 540mm  
SSHHP4: 1504mm x 660mm x 540mm  
SSHHP5: 1831mm x 660mm x 540mm  
SSHHP6: 2158mm x 660mm x 540mm

#### ELECTRICAL CONNECTIONS

220V/240V; 1 phase 50Hz  
SSHHP2: 1.5kW loading  
SSHHP3: 2.4kW loading  
SSHHP4: 3.0kW loading  
SSHHP5: 3.9kW loading  
SSHHP6: 4.8kW loading  
Cable: Units under 3.1kW fitted with 2 metres of cable and 13amp plug  
Units over 3.1kW fitted with 2 metres of cable and 32amp commando socket

#### CONSTRUCTION

Top: Stainless steel  
Exterior: Stainless steel  
Interior: Galvanised steel

#### CAPACITY

SSHHP2: 2 x GN1/1  
SSHHP3: 3 x GN1/1  
SSHHP4: 4 x GN1/1  
SSHHP5: 5 x GN1/1  
SSHHP6: 6 x GN1/1

#### PRODUCT FEATURES

- Designed to maintain the temperature of hot food using an energy regulator controlled element providing heat to the base supplementing dimmer controlled quartz halogen heat lamps from above
- Toughened flat glass sneeze screen and over shelf
- Controls mounted in bright polished stainless steel light box
- Operator changeable quartz halogen heat lamps
- Stainless steel surround to GN1/1 compatible ceramic hot plate
- Designed for either assisted or self service

#### OPTIONS

- Front facing controls
- BMCV3 GN1/1 carvery conversion



# VICTOR

TELEPHONE  
01274 722125

EMAIL  
sales@victormfg.co.uk

WEBSITE  
www.victoronline.co.uk