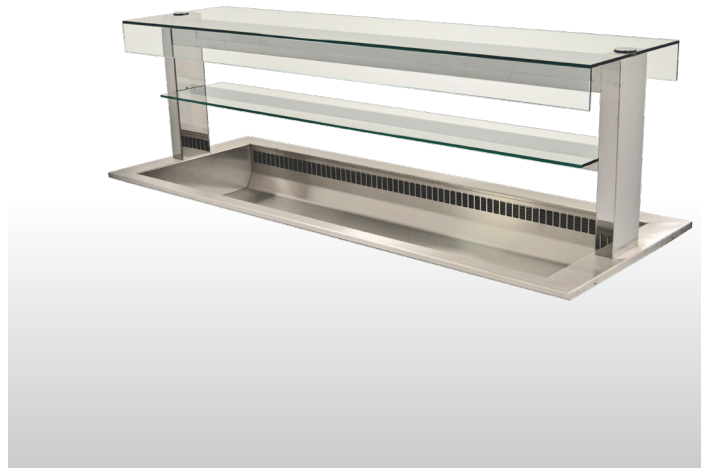


SYNERGY DROP INS

SQ REFRIGERATED BLOWN AIR ISLAND WELL

MODEL NO: SSRIW

The Synergy range of Refrigerated blown air wells are designed to be dropped into a counter surface to form a food servery. Four sizes in the range which accept 100mm deep GN1/1 size gastronorm containers. Each Synergy display is self-contained and easily installed.



DIMENSIONS

SSRIWL2: 850mm x 660mm x 540mm

SSRIWL3: 1177mm x 660mm x 540mm

SSRIWL4: 1504mm x 660mm x 540mm

SSRIWL5: 1831mm x 660mm x 540mm

ELECTRICAL CONNECTIONS

220V/240V; 1 phase 50Hz

SSRIWL2: 1.6kW loading

SSRIWL3: 1.6kW loading

SSRIWL4: 2.1kW loading

SSRIWL5: 2.4kW loading

Cable: Units under 3.1kW fitted with 2 metres of cable and 13amp plug

CONSTRUCTION

Top: Stainless steel

Exterior: Stainless steel

Interior: Stainless steel

CAPACITY

SSRIWL2: 2 x GN1/1

SSRIWL3: 3 x GN1/1

SSRIWL4: 4 x GN1/1

SSRIWL5: 5 x GN1/1

REFRIGERANT

R452a - CFC free refrigerant

OPERATING CONDITIONS

Designed to comply with the operating requirements of EN ISO 23953 - 2:2005

Performance level M1 (-1°C to +5°C) in

Climate class 3 (25°C 60% RH 0.2m/s)

In use Victor refrigerated Synergy units will

maintain the core product temperature of

pre-chilled food below 5°C in ambient

temperatures up to 27°C - 50% Relative

Humidity

PRODUCT FEATURES

- Designed for self service from both sides

GANTRY

- Constructed from bright polished stainless steel
- LED illumination to stainless steel light box
- Toughened glass screen with curve to both sides and over shelf
- Digital temperature control and readout

WELL

- 304 Stainless steel well - 170mm deep
- Load line indicator at 100mm to assist in the safe presentation of food
- Accepts GN1/1 gastronorm containers up to 100mm deep
- Completely removable well giving easy access for cleaning and maintenance



VICTOR

TELEPHONE
01274 722125

EMAIL
sales@victormfg.co.uk

WEBSITE
www.victoronline.co.uk