

Nexus
MICROMARKETS



MicroMarket CONCEPT

nexus

/'nɛksəs/

noun

Definition: "An important connection between the parts of a system."

The MicroMarket concept is fast becoming a super trend within the catering market. It is a revolutionary refreshment solution that spans across many sectors.

To have a food offering in any premises is very labour intensive and costly to a business. The MicroMarket system reduces a lot of that cost and allows for service over a greater period of time than a traditional canteen, without additional expense.

There are many other benefits to using MicroMarkets including:

- Increasing employee engagement
- Quicker service
- Staff/customers remain on site
- Broad product range
- Easy individual branding
- 24/7 service



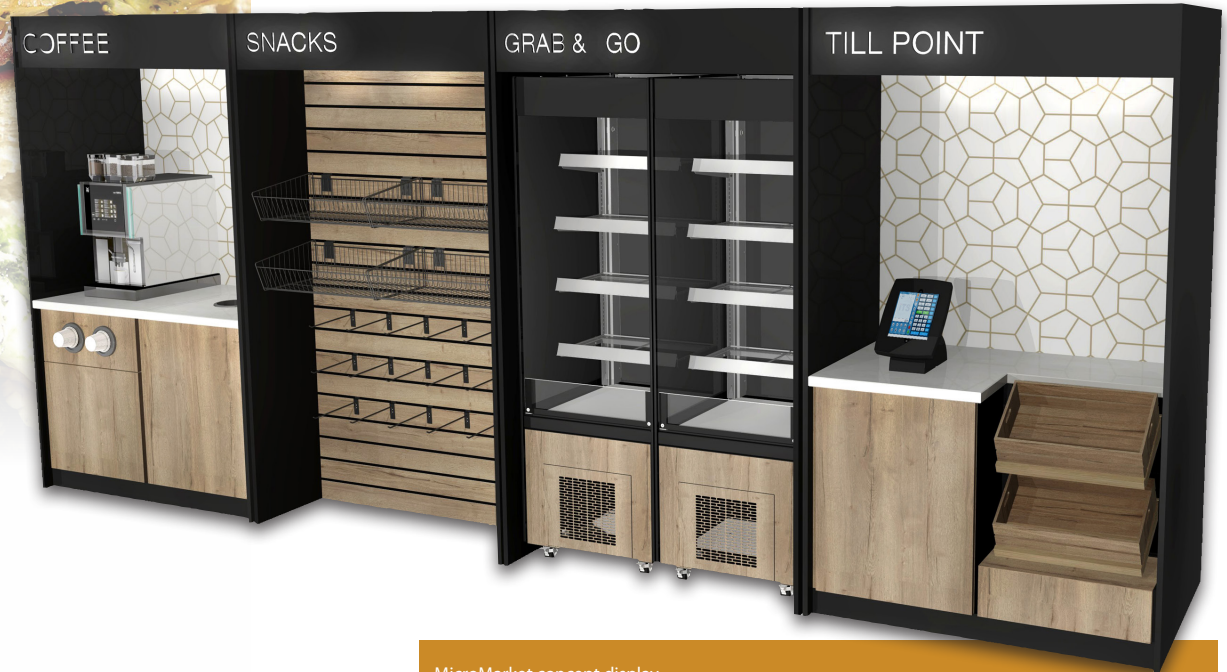
THE CONCEPT

RESEARCH

Only 8% of people now have breakfast, lunch and dinner at a "traditional time". A significant 90% of people are replacing set meal times with super snacking 2-3 times a day. Customers' needs are forever changing and the flexibility of this product range will allow the site offering to adapt to that change.

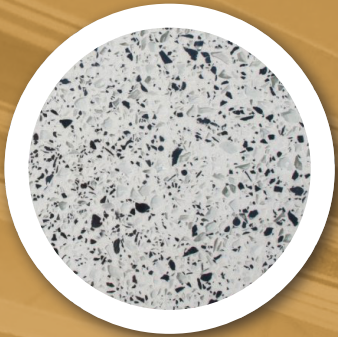
This MicroMarket concept can be used in a variety of sectors including Retail - petrol forecourts, Education - Universities & Colleges, Leisure - Sports Centres & Gyms, Hotels & Business & industry - staff rest areas.

In the United States, where they are ahead of us on this trend with around 23,000 sites, reports found that sites have 18% more daily visits once the system has been installed. When you compare a site that has historically used vending machines there has been an 80% uptake in revenue.



MicroMarket concept display

choices



HOW IT WORKS

PICK YOUR HOUSING

- Available in 5 sizes
- Available in 2 finish qualities: Melamine and laminate

**STEP
1**

PICK THE FUNCTION

- Chilled Grab and Go
- Heated Grab and Go
- Beverage station
 - Till station
 - Impulse
- Merchandising section
- Food preparation area

**STEP
2**

PICK YOUR FINISH

- 4 different top options
- Price based on mid-range laminate
- Other finishes available on request

**STEP
3**



Nexus

RETAIL HOUSINGS



5 model widths 600, 900, 1200, 1500 and 1800mm. These units are constructed using either 18mm thick Melamine faced MDF or high spec 20mm thick laminate faced MDF.

The standard colour choices are from the Egger range. Exposed edges are PVC edge protected.

The functionality of the retail housing is determined by the choice of the interior.



1200 Retail housing unit

TECHNICAL SPECIFICATIONS

SPECIFICATION

MODEL	600mm*	900mm*	1200mm*	1500mm*	1800mm*
Melamine faced MDF	MMR60M	MMR90M	MMR120M	MMR150M	MMR180M
Laminate faced MDF	MMR60L	MMR90L	MMR120L	MMR150L	MMR180L
Roller shutter	MMROL60	MMROL90	MMROL120	MMROL150	MMROL180

*Approx internal dimensions

The retail housings form the basis of the MicroMarket system. Cleverly designed to allow quick and easy on-site installation, with service voids to the rear of the units. Illumination can be fitted behind the pelmets, vinyl backgrounds can be specified to brighten up the area and vinyl wraps can be applied to outer surfaces to create individual branding.

For increased security where required, lockable roller shutters can be fitted to protect stock when not in use.



Snack board



Vinyl wall tile option

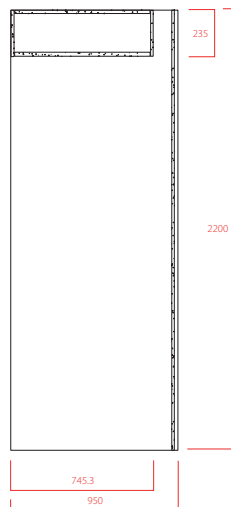
housings



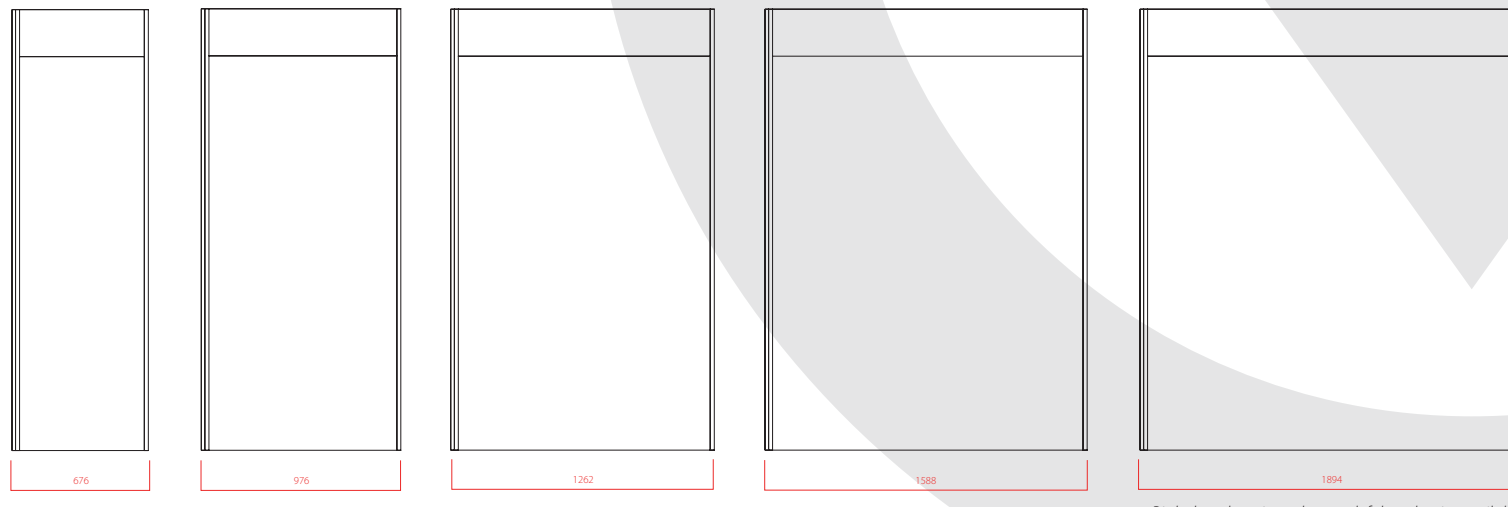
DIMENSIONS

All sizes shown in millimetres

SIDE ELEVATION



FRONT ELEVATION



Right hand versions shown - left hand units available



Nexus TILL STATIONS



These provide a payment point, in your choice of worktop finish, for your till or EPOS system, alongside an area for impulse purchases.

The worktop material can be customised to match the overall design / budget of the area using laminate, stainless steel, Corian or quartz work tops.

The specification is completed by adding from a choice of; undercounter cupboards, wooden impulse baskets, vinyl prints to the interior back wall or a slatted back wall for wire baskets or hooks.



1200 Till housing unit

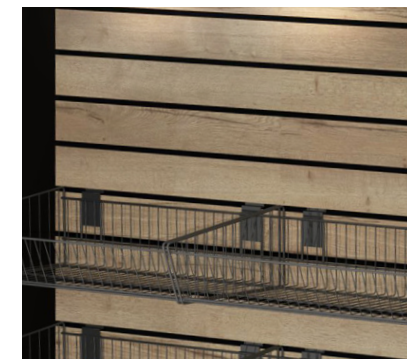
TECHNICAL SPECIFICATIONS

SPECIFICATION					
MODEL	600mm*	900mm*	1200mm*	1500mm*	1800mm*
Melamine faced MDF	MMR60M	MMR90M	MMR120M	MMR150M	MMR180M
Laminate faced MDF	MMR60L	MMR90L	MMR120L	MMR150L	MMR180L
Roller shutter	MMROL60	MMROL90	MMROL120	MMROL150	MMROL180
WORK TOPS	600mm	900mm	1200mm	1500mm	1800mm
Laminate	TUTL60	TUTL90	TUTL120	TUTL150	TUTL180
Stainless steel	TUTS60	TUTS90	TUTS120	TUTS150	TUTS180
Corian	TUTC60	TUTC90	TUTC120	TUTC150	TUTC180
Quartz	TUTQ60	TUTQ90	TUTQ120	TUTQ150	TUTQ180
PANEL VOID* 300mm	600mm	900mm	1200mm	1500mm	1800mm
MUPV30	MUPV30	MUPV30	MUPV30	MUPV30	MUPV30
* Can be combined with cupboard					
CUPBOARD*	600mm	900mm	1200mm	1500mm	1800mm
	MUC60	MUC90	MUC120	-	-
* Select one or more to suit housing width					
OPTIONS	600mm	900mm	1200mm	1500mm	1800mm
Half height vinyl	MMRV60	MMRV90	MMRV120	MMRV150	MMRV180
Slat wall insert (1 row)	MMSWS60	MMSWS90	MMSWS120	MMSWS150	MMSWS180
Impulse basket	MMB60	MMB90	MMB120	-	-

*Approx internal dimensions



Wicker baskets



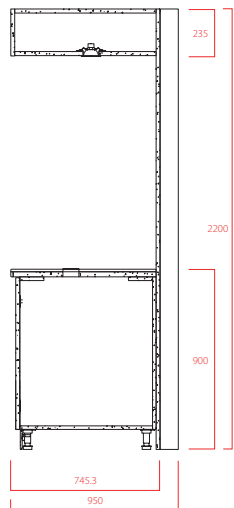
Slat wall



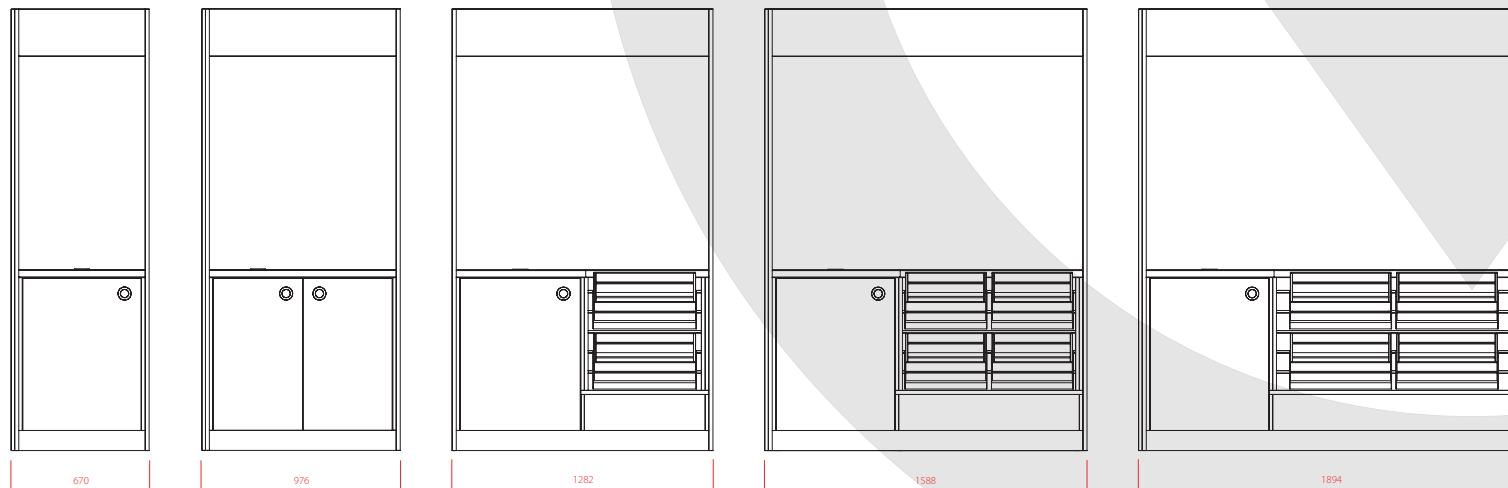
DIMENSIONS

All sizes shown in millimetres

SIDE ELEVATION



FRONT ELEVATION



Nexus

BEVERAGE UNITS

These provide a platform for coffee or beverage machines positioned on a worktop with a cupboard or void under.

The wider units can provide space for an additional cupboard, under counter fridges, waste bins and cup dispensers.

The rear panel can be customised using a vinyl board and or a slat wall insert.



1200 Beverage unit

TECHNICAL SPECIFICATIONS

MODEL	600mm*	900mm*	1200mm*	1500mm*	1800mm*	
Melamine faced MDF	MMR60M	MMR90M	MMR120M	MMR150M	MMR180M	
Laminate faced MDF	MMR60L	MMR90L	MMR120L	MMR150L	MMR180L	
Roller shutter	MMROL60	MMROL90	MMROL120	MMROL150	MMROL180	
WORK TOPS	600mm	900mm	1200mm	1500mm	1800mm	
Laminate	BUTL60	BUTL90	BUTL120	BUTL150	BUTL180	
Stainless steel	BUTS60	BUTS90	BUTS120	BUTS150	BUTS180	
Corian	BUTC60	BUTC90	BUTC120	BUTC150	BUTC180	
Quartz	BUTQ60	BUTQ90	BUTQ120	BUTQ150	BUTQ180	
PANEL VOID*	300mm	600mm	900mm	1200mm	1500mm	1800mm
	MUPV30	MUPV60	MUPV90	MUPV120	MUPV150	MUPV180
<i>* Can be combined with cupboard</i>						
CUPBOARD*	600mm	900mm	1200mm	1500mm	1800mm	
	MUC60	MUC90	MUC120	-	-	
<i>* Select one or more to suit housing width</i>						
FRIDGE VOID*	600mm	-	-	-	-	
	MMFV60	-	-	-	-	
<i>* Under counter</i>						
OPTIONS	600mm	900mm	1200mm	1500mm	1800mm	
Half height vinyl	MMRV60	MMRV90	MMRV120	MMRV150	MMRV180	
Slat wall insert (1 row)	MMSWS60	MMSWS90	MMSWS120	MMSWS150	MMSWS180	
Scrapping ring & bin	MMSC					
Cup dispenser single						
Cup dispenser double						
Cup dispenser triple						

**Approx internal dimensions*



Beverage cup dispenser



Illuminated sign, down lighter and vinyl back

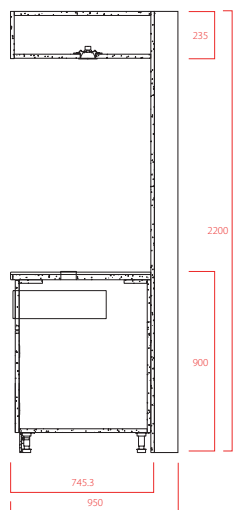
drinks



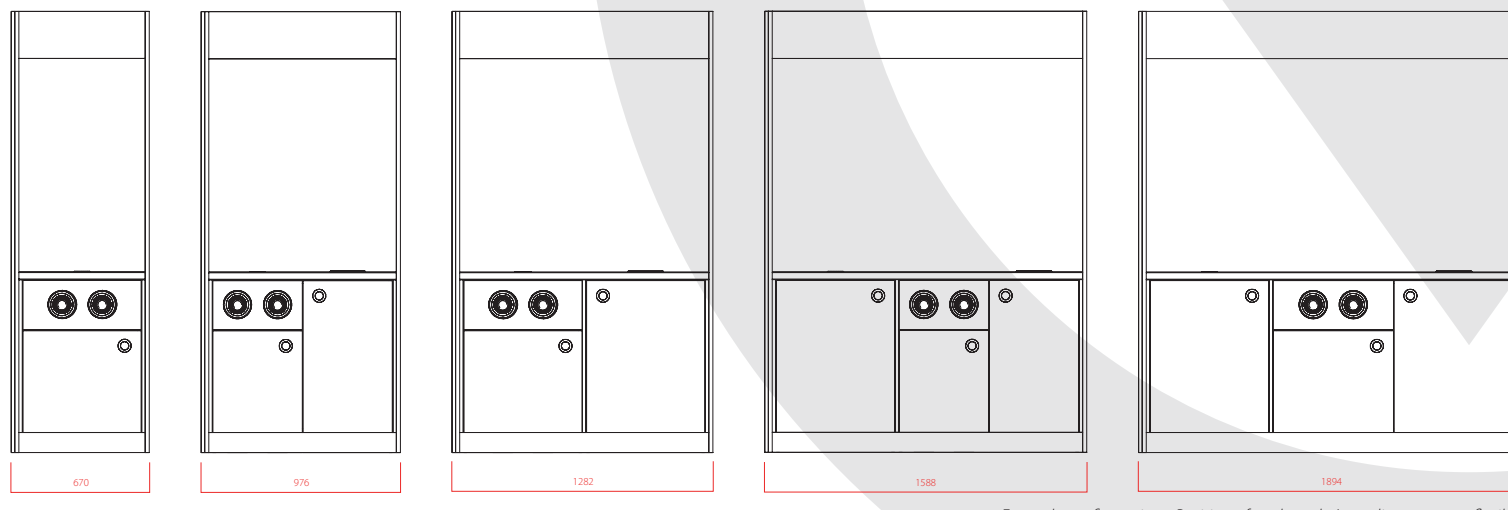
DIMENSIONS

All sizes shown in millimetres

SIDE ELEVATION



FRONT ELEVATION



Example configurations. Position of cupboards / cup dispensers are flexible



Nexus

GRAB & GO POINTS



These comprise the standard retail housing with the addition of the Victor Evolution heated or refrigerated self service display units which push into the open space.

Alternatively other suitably sized display equipment may be used, such as bottle coolers or upright, high capacity multi-level displays.

If low height units are specified the visible back wall can be fitted with a vinyl backing or single row slat wall insert to provide additional display.



1200 Grab & Go unit

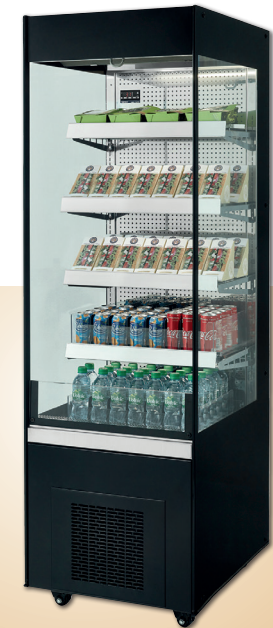
TECHNICAL SPECIFICATIONS

SPECIFICATION					
MODEL	600mm*	900mm*	1200mm*	1500mm*	1800mm*
Melamine faced MDF	MMR60M	MMR90M	MMR120M	MMR150M	MMR180M
Laminate faced MDF	MMR60L	MMR90L	MMR120L	MMR150L	MMR180L
Roller shutter	MMROL60	MMROL90	MMROL120	MMROL150	MMROL180
DISPLAYS		600mm	900mm	1200mm	
Evolution plus heated 1900mm high		SEHT60SW	SEHT90SW	-	
Evolution plus refrigerated 1900mm high		SERT60SW	SERT90SW	-	
Evolution heated 1350mm high		SEH60SW	SEH90SW	SEH120SW	
Evolution refrigerated 1350mm high		SER60SW	SER90SW	SER120SW	

**Approx internal dimensions*



Evolution plus heated SEHT60SW



Evolution plus refrigerated SERT60SW

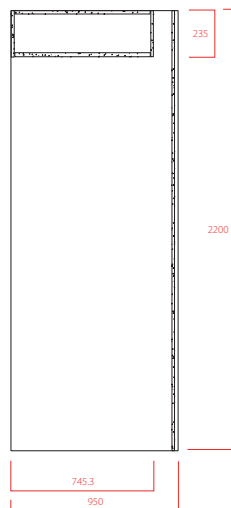
grab & go



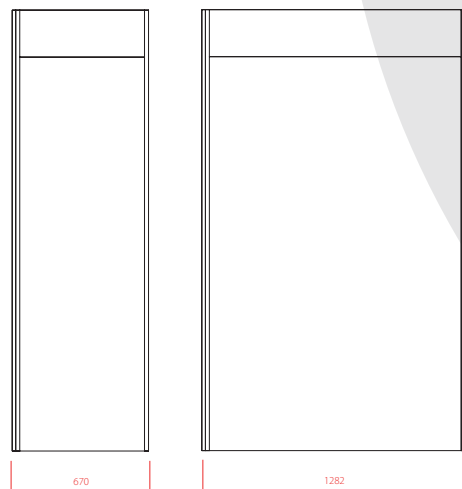
DIMENSIONS

All sizes shown in millimetres

SIDE ELEVATION



FRONT ELEVATION



Evolution heated SEH90SW



Evolution refrigerated SER90SW



Nexus SNACK UNITS

These are a retail housing with the addition of a slatted back wall or metal grids to provide a space for an impulse purchase display.

The units are fully customisable with a variety of display methods including flat or sloping wire baskets, shelving, prongs and hooks. In addition, brackets can be provided to facilitate the mounting of AV equipment.

SNACKS



1200 Snack unit

TECHNICAL SPECIFICATIONS

SPECIFICATION					
MODEL	600mm*	900mm*	1200mm*	1500mm*	1800mm*w
Melamine faced MDF	MMR60M	MMR90M	MMR120M	MMR150M	MMR180M
Laminate faced MDF	MMR60L	MMR90L	MMR120L	MMR150L	MMR180L
Roller shutter	MMROL60	MMROL90	MMROL120	MMROL150	MMROL180
OPTIONS	600mm	900mm	1200mm	1500mm	1800mm
Full back slat wall	MMSW60	MMSW90	MMSW120	-	-
Slat wall metal grid	MMSWG60	-	MMSWG120	-	-
Sloping laminate shelf	MMLS60	MMLS90	MMLS120	MMLS150	MMLS180
Flat wire baskets	MMFB				
Sloping wire baskets	MMSB				
Small slat wire basket	MMSSB				
250mm slatwall prong	MMSWP				
250mm euro hook	MMSWE				
Reinforcement & TV bracket	MMTVB				

*Approx internal dimensions



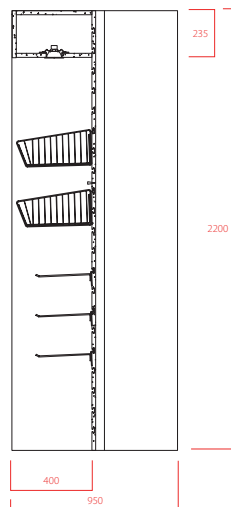
snacks



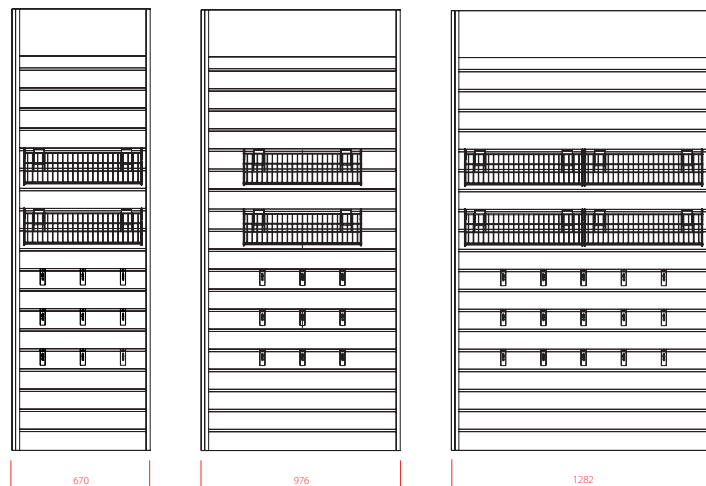
DIMENSIONS

All sizes shown in millimetres

SIDE ELEVATION



FRONT ELEVATION



Nexus FINISHES



Victor offers a superb selection of counter tops and fascia panels in either plain colour, wood grain, Corian, quartz or textured laminate.

Alternative edge moulding details are available for all materials.

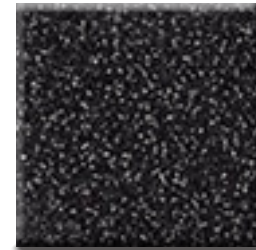


1200 Beverage unit with white acrylic counter

COUNTER TOPS AND FASCIA PANELS

LAMINATE

Other finishes are available on request



F238
Black Terrazzo



H3303
Natural Hamilton Oak



F303
Ferro Titan Grey



H1180
Natural Halifax Oak



H1486
Pasadena Pine



F186
Light Grey Chicago Concrete



U163
Curry Yellow



U646
Niagara Green



U504
Tyrolean Blue

finishes

CORIAN

Other finishes are available on request



Dusk



Deep Mink



Deep Nocturn



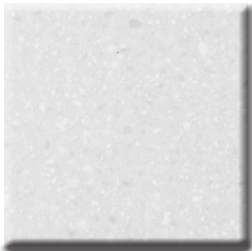
White Jasmin



Stratus



Dove



Antartica



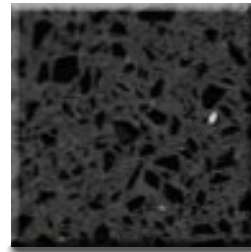
Deep Caviar



Designer White

QUARTZ

Other finishes are available on request



Black Starlight



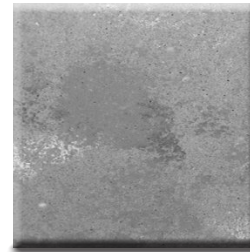
Blanco Zeus



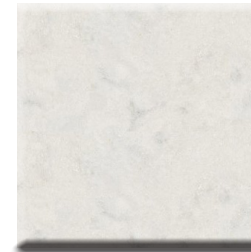
Cemento Spa



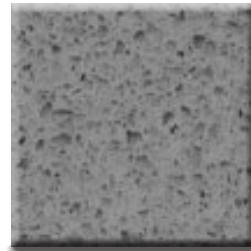
Taurus Terazzo



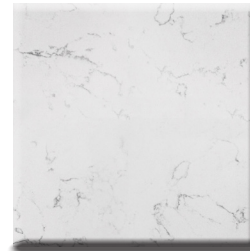
Grey Concrete



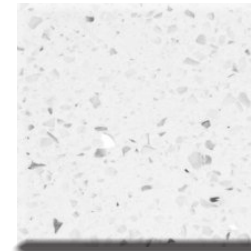
Lagoon



Slate Grey



Areti Bianco



White Stralight

REGISTERED OFFICE

Victor Manufacturing Ltd
Lonsdale Works, Gibson Street
Bradford BD3 9TF

TELEPHONE

01274 722125

EMAIL

sales@victormfg.co.uk

WEBSITE

www.victoronline.co.uk



*All Victor products are
manufactured in the UK and
carry a two years warranty*

