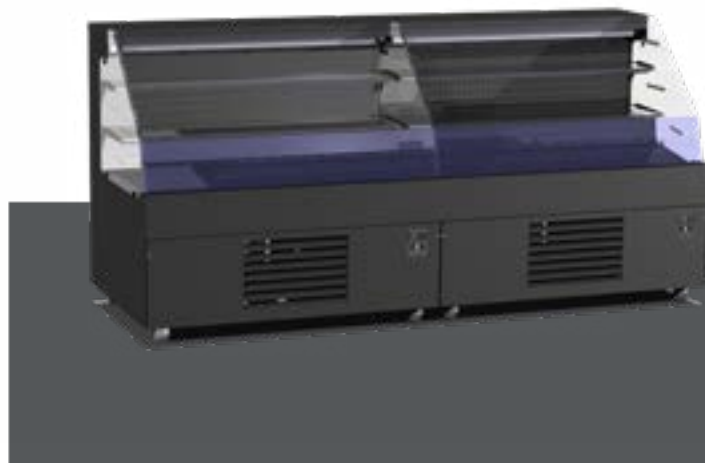


# DELI REFRIGERATED DISPLAY

MODEL NO: DRD

Victor's DRD models are low-level refrigerated retail displays, ideal for supermarkets. Supplied in manageable modular sizes, they allow for easier transport and access into buildings, with interchangeable configurations to suit different layouts.



## DIMENSIONS

### Individual modules:

- DRD095V - 950 x 901 x 1200mm
- DRD100V - 1000 x 901 x 1200mm
- DRD125V - 1250 x 901 x 1200mm
- DRD150V - 1500 x 901 x 1200mm

### Full units:

- DRD190V - 1900 x 901 x 1200mm
- DRD200V - 2000 x 901 x 1200mm
- DRD250V - 2500 x 901 x 1200mm
- DRD300V - 3000 x 901 x 1200mm

## CONSTRUCTION

Constructed using powder coated black stainless steel with 8mm glass shelves.

## REFRIGERANT

R290

## OPERATING CONDITIONS

Designed to comply with the operating requirements of EN ISO 23953

Performance level M1 (-1°C to +5°C) in Climate class 3 (25°C 65% RH 0.2 m/s)

## ELECTRICAL CONNECTIONS

DRD095V:

- Max rated power: 2.66KW
- Nominal power @ CC3 1.03KW
- Nominal power @ CC0 0.56KW
- Voltage 220/240 ~ 50Hz .

DRD095V:

- Max rated power: 2.66KW
- Nominal power @ CC3 1.17KW
- Nominal power @ CC0 0.70KW
- Voltage 220/240 ~ 50Hz .

## PRODUCT FEATURES

- Powder coated black finish
- Base and 2 x refrigerated glass shelves (adjustable glass)
- M class 1 refrigeration (can hold any products between -1°C to +5°C)
- Integral night blinds
- Interchangeable configurations
- Digital controller
- Integral ducting System with easy clean Air filter
- Supplied on adjustable castors for levelling on site
- Supplied in manageable modular sizes for ease of transport and access into building
- Self-cleaning condenser
- On demand boil off

## OPTIONS

- Baffled Gill when building units into shop fit base
- Castor covers



TELEPHONE  
01274 722125

EMAIL  
sales@victormfg.co.uk

WEBSITE  
www.victoronline.co.uk